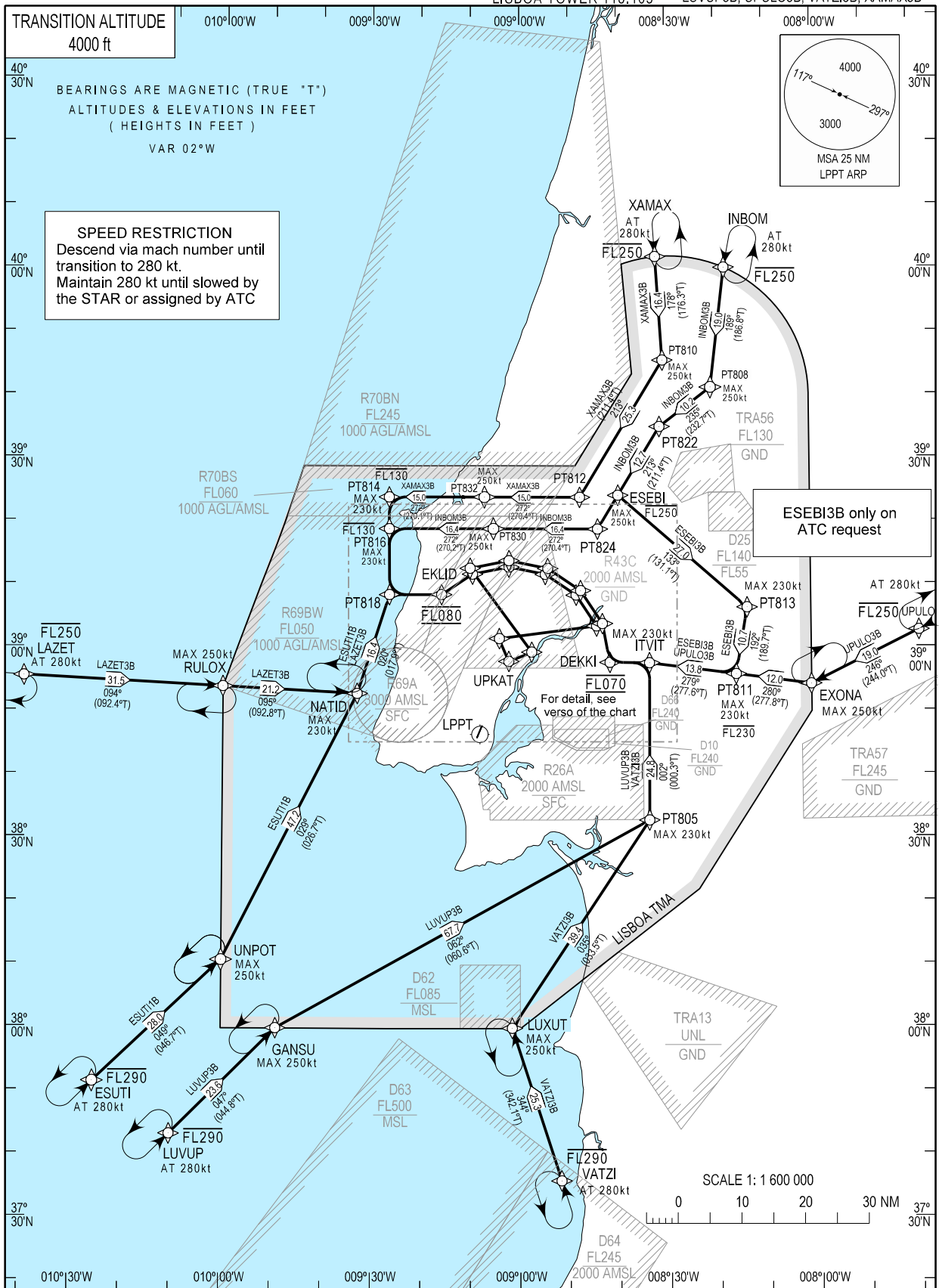


STANDARD ARRIVAL CHART - INSTRUMENT (STAR) - ICAO

LISBOA ARR INFORMATION 124.155 LISBOA, Humberto Delgado (LPPT)  
LISBOA CONTROL 123.980 LISBOA APPROACH 119.105 RNAV Rwy 20  
LISBOA ARRIVAL 125.130 ESEBI3B, ESUTI1B, INBOM3B, LAZET3B  
LISBOA TOWER 118.105 LUVUP3B, UPULO3B, VATZI3B, XAMAX3B





LISBOA STAR RNAV1 ESEBI3B (RWY 20) ONLY ON ATC REQUEST										
Path Terminator	Waypoint			Course/Track MAG (True)	Dist NM	Turn Direction	Constraints		Navigation Specification	Remarks
	Identifier	Flyover	Coordinates				Level	Speed		
TF	ESEBI	N	392411.48N 0083959.28W	-	-	-	- FL250	250 kt	RNAV 1	To be used only on ATC request. Clearance Limit: UPKAT
TF	PT813	N	390623.99N 0081353.30W	133 (131.1)	26.96	-	-	230 kt	RNAV 1	
TF	PT811	N	385552.44N 0081611.08W	192 (189.7)	10.67	-	- FL230	230 kt	RNAV 1	
TF	ITVIT	N	385741.47N 0083343.99W	279 (277.6)	13.81	-	-	230 kt	RNAV 1	
TF	DEKKI	N	385747.01N 0084144.40W	273 (270.9)	6.25	-	@FL070	@220 kt	RNAV 1	
TF	ROMEPE	N	390355.31N 0084314.21W	351 (349.2)	6.24	-	@FL070	@220 kt	RNAV 1	
TF	EVPAP	N	390908.65N 0084738.42W	329 (326.7)	6.24	-	@FL070	@220 kt	RNAV 1	
TF	FUSSI	N	391239.03N 0085417.10W	306 (304.2)	6.24	-	@FL070	@220 kt	RNAV 1	
TF	PT853	N	391354.17N 0090209.28W	283 (281.6)	6.24	-	@FL070	@220 kt	RNAV 1	
TF	PT851	N	391242.50N 0091002.33W	261 (259.0)	6.24	-	@FL070	@220 kt	RNAV 1	
TF	ARNIT	N	385926.60N 0085733.61W	146 (143.7)	16.43	-	-	@180 kt	RNAV 1	
TF	UPKAT	N	385759.04N 0090212.05W	250 (248.1)	3.90	-	@4000 ft	@180 kt	RNAV 1	

LISBOA STAR RNAV1 ESUTI 1B (RWY 20)										
Path Terminator	Waypoint			Course/Track MAG (True)	Dist NM	Turn Direction	Constraints		Navigation Specification	Remarks
	Identifier	Flyover	Coordinates				Level	Speed		
IF	ESUTI	N	375135.67N 0102548.77W	-	-	-	- FL290	@280Kts	RNAV 1	Clearance Limit: UPKAT
TF	UNPOT	N	381045.63NN 0100000.00W	049 (046.7)	27.97	-	-	250Kts	RNAV 1	
TF	NATID	N	385254.02N 0093251.90W	029 (026.7)	47.18	-	-	230Kts	RNAV 1	
TF	PT818	N	390832.66N 0092623.32W	020 (017.9)	16.42	-	-	230Kts	RNAV 1	
TF	EKLID	N	390832.54N 0091549.09W	092 (090.0)	8.22	-	@FL080	@220Kts	RNAV 1	
TF	ROTBU	N	391146.95N 0090933.03W	058 (056.4)	5.85	-	@FL080	@220Kts	RNAV 1	
TF	LERLI	N	391254.12N 0090209.64W	081 (078.9)	5.85	-	@FL080	@220Kts	RNAV 1	
TF	FADEF	N	391143.70N 0085447.07W	103 (101.5)	5.85	-	@FL080	@220Kts	RNAV 1	
TF	PT852	N	390826.49N 0084833.35W	126 (124.1)	5.85	-	@FL080	@220Kts	RNAV 1	
TF	PT850	N	390332.78N 0084425.61W	149 (146.7)	5.85	-	@FL080	@220Kts	RNAV 1	
TF	COCUN	N	390135.52N 0090406.96W	265 (262.8)	15.46	-	-	@180Kts	RNAV 1	
TF	UPKAT	N	385759.04N 0090212.05W	159 (157.5)	3.90	-	@4000FT	@180Kts	RNAV 1	

LISBOA STAR RNAV1 INBOM3B (RWY 20)										
Path Terminator	Waypoint			Course/Track MAG (True)	Dist NM	Turn Direction	Constraints		Navigation Specification	Remarks
	Identifier	Flyover	Coordinates				Level	Speed		
IF	INBOM	N	400006.91N 0081807.21W	-	-	-	- FL250	@280 kt	RNAV 1	Clearance Limit: UPKAT
TF	PT808	N	394111.83N 0082101.09W	189 (186.8)	19.03	-	-	250 kt	RNAV 1	
TF	PT822	N	393500.57N 0083129.79W	235 (232.7)	10.19	-	-	250 kt	RNAV 1	
TF	ESEBI	N	392411.48N 0083959.28W	213 (211.4)	12.65	-	-	250 kt	RNAV 1	
TF	PT824	N	391851.89N 0084408.99W	213 (211.3)	6.22	-	-	250 kt	RNAV 1	
TF	PT830	N	391856.68N 0090518.10W	272 (270.4)	16.42	-	-	250 kt	RNAV 1	
TF	PT816	N	391857.63N 0092627.23W	272 (270.2)	16.42	-	-FL130	230 kt	RNAV 1	
TF	PT818	N	390832.66N 0092623.32W	182 (179.7)	10.41	-	-	230 kt	RNAV 1	
TF	EKLID	N	390832.54N 0091549.09W	092 (090.0)	8.22	-	@FL080	@220 kt	RNAV 1	
TF	ROTBU	N	391146.95N 0090933.03W	058 (056.4)	5.85	-	@FL080	@220 kt	RNAV 1	
TF	LERLI	N	391254.12N 0090209.64W	081 (078.9)	5.85	-	@FL080	@220 kt	RNAV 1	
TF	FADEF	N	391143.70N 0085447.07W	103 (101.5)	5.85	-	@FL080	@220 kt	RNAV 1	
TF	PT852	N	390826.49N 0084833.35W	126 (124.1)	5.85	-	@FL080	@220 kt	RNAV 1	
TF	PT850	N	390332.78N 0084425.61W	149 (146.7)	5.85	-	@FL080	@220 kt	RNAV 1	
TF	COCUN	N	390135.52N 0090406.96W	265 (262.9)	15.46	-	-	@180 kt	RNAV 1	
TF	UPKAT	N	385759.04N 0090212.05W	159 (157.5)	3.90	-	@4000 ft	@180 kt	RNAV 1	

LISBOA STAR RNAV1 LAZET3B (RWY 20)										
Path Terminator	Waypoint			Course/Track MAG (True)	Dist NM	Turn Direction	Constraints		Navigation Specification	Remarks
	Identifier	Flyover	Coordinates				Level	Speed		
IF	LAZET	N	385526.20N 0104015.64W	-	-	-	- FL250	@280 kt	RNAV 1	Clearance Limit: UPKAT
TF	RULOX	N	385400.00N 0100000.00W	094 (092.4)	31.46	-	-	250 kt	RNAV 1	
TF	NATID	N	385254.02N 0093251.90W	095 (092.8)	21.21	-	-	230 kt	RNAV 1	
TF	PT818	N	390832.66N 0092623.32W	020 (017.9)	16.42	-	-	230 kt	RNAV 1	
TF	EKLID	N	390832.54N 0091549.09W	092 (090.0)	8.22	-	@FL080	@220 kt	RNAV 1	
TF	ROTBU	N	391146.95N 0090933.03W	058 (056.4)	5.85	-	@FL080	@220 kt	RNAV 1	
TF	LERLI	N	391254.12N 0090209.64W	081 (078.9)	5.85	-	@FL080	@220 kt	RNAV 1	
TF	FADEF	N	391143.70N 0085447.07W	103 (101.5)	5.85	-	@FL080	@220 kt	RNAV 1	
TF	PT852	N	390826.49N 0084833.35W	126 (124.1)	5.85	-	@FL080	@220 kt	RNAV 1	
TF	PT850	N	390332.78N 0084425.61W	149 (146.7)	5.85	-	@FL080	@220 kt	RNAV 1	
TF	COCUN	N	390135.52N 0090406.96W	265 (262.8)	15.46	-	-	@180 kt	RNAV 1	
TF	UPKAT	N	385759.04N 0090212.05W	159 (157.5)	3.90	-	@4000 ft	@180 kt	RNAV 1	

LISBOA STAR RNAV1 LUVUP3B (RWY 20)										
Path Terminator	Waypoint			Course/Track MAG (True)	Dist NM	Turn Direction	Constraints		Navigation Specification	Remarks
	Identifier	Flyover	Coordinates				Level	Speed		
IF	LUVUP	N	374313.23N 0101006.92W	-	-	-	- FL290	@280 kt	RNAV 1	Clearance Limit: UPKAT
TF	GANSU	N	380000.00N 0094903.18W	047 (044.8)	23.65	-	-	250 kt	RNAV 1	
TF	PT805	N	383250.37N 0083353.07W	062 (060.6)	67.68	-	-	230 kt	RNAV 1	
TF	ITVIT	N	385741.47N 0083343.99W	002 (000.3)	24.83	-	-	230 kt	RNAV 1	
TF	DEKKI	N	385747.01N 0084144.40W	273 (270.9)	6.25	-	@FL070	@220 kt	RNAV 1	
TF	ROMEPE	N	390355.31N 0084314.21W	351 (349.2)	6.24	-	@FL070	@220 kt	RNAV 1	
TF	EVPAP	N	390908.65N 0084738.42W	329 (326.7)	6.24	-	@FL070	@220 kt	RNAV 1	
TF	FUSSI	N	391239.03N 0085417.10W	306 (304.2)	6.24	-	@FL070	@220 kt	RNAV 1	
TF	PT853	N	391354.17N 0090209.28W	283 (281.6)	6.24	-	@FL070	@220 kt	RNAV 1	
TF	PT851	N	391242.50N 0091002.33W	261 (259.0)	6.24	-	@FL070	@220 kt	RNAV 1	
TF	ARNIT	N	385926.60N 0085733.61W	146 (143.7)	16.43	-	-	@180 kt	RNAV 1	
TF	UPKAT	N	385759.04N 0090212.05W	250 (248.1)	3.90	-	@4000 ft	@180 kt	RNAV 1	

LISBOA STAR RNAV1 UPULO3B (RWY 20)										
Path Terminator	Waypoint			Course/Track MAG (True)	Dist NM	Turn Direction	Constraints		Navigation Specification	Remarks
	Identifier	Flyover	Coordinates				Level	Speed		
IF	UPULO	N	390237.57N 0073907.04W	-	-	-	- FL250	@280 kt	RNAV 1	Clearance Limit: UPKAT
TF	EXONA	N	385415.89N 0080100.00W	246 (244.0)	19.00	-	-	250 kt	RNAV 1	
TF	PT811	N	385552.44N 0081611.08W	280 (277.8)	11.96	-	-	230 kt	RNAV 1	
TF	ITVIT	N	385741.47N 0083343.99W	279 (277.6)	13.81	-	-	230 kt	RNAV 1	
TF	DEKKI	N	385747.01N 0084144.40W	273 (270.9)	6.25	-	@FL070	@220 kt	RNAV 1	
TF	ROMEPE	N	390355.31N 0084314.21W	351 (349.2)	6.24	-	@FL070	@220 kt	RNAV 1	
TF	EVPAP	N	390908.65N 0084738.42W	329 (326.7)	6.24	-	@FL070	@220 kt	RNAV 1	
TF	FUSSI	N	391239.03N 0085417.10W	306 (304.2)	6.24	-	@FL070	@220 kt	RNAV 1	
TF	PT853	N	391354.17N 0090209.28W	283 (281.6)	6.24	-	@FL070	@220 kt	RNAV 1	
TF	PT851	N	391242.50N 0091002.33W	261 (259.0)	6.24	-	@FL070	@220 kt	RNAV 1	
TF	ARNIT	N	385926.60N 0085733.61W	146 (143.7)	16.43	-	-	@180 kt	RNAV 1	
TF	UPKAT	N	385759.04N 0090212.05W	250 (248.1)	3.90	-	@4000 ft	@180 kt	RNAV 1	

LISBOA STAR RNAV1 VATZI3B (RWY 20)										
Path Terminator	Waypoint			Course/Track MAG (True)	Dist NM	Turn Direction	Constraints		Navigation Specification	Remarks
	Identifier	Flyover	Coordinates				Level	Speed		
IF	VATZI	N	373552.11N 0085147.09W	-	-	-	- FL290	@280 kt	RNAV 1	Clearance Limit: UPKAT. Pending on military activity.
TF	LUXUT	N	375959.27N 0090136.98W	344 (342.1)	25.32	-	-	250 kt	RNAV 1	
TF	PT805	N	383250.37N 0083353.07W	035 (033.5)	39.42	-	-	230 kt	RNAV 1	
TF	ITVIT	N	385741.47N 0083343.99W	002 (000.3)	24.83	-	-	230 kt	RNAV 1	
TF	DEKKI	N	385747.01N 0084144.40W	273 (270.9)	6.25	-	@FL070	@220 kt	RNAV 1	
TF	ROMEPE	N	390355.31N 0084314.21W	351 (349.2)	6.24	-	@FL070	@220 kt	RNAV 1	
TF	EVPAP	N	390908.65N 0084738.42W	329 (326.7)	6.24	-	@FL070	@220 kt	RNAV 1	
TF	FUSSI	N	391239.03N 0085417.10W	306 (304.2)	6.24	-	@FL070	@220 kt	RNAV 1	
TF	PT853	N	391354.17N 0090209.28W	283 (281.6)	6.24	-	@FL070	@220 kt	RNAV 1	
TF	PT851	N	391242.50N 0091002.33W	261 (259.0)	6.24	-	@FL070	@220 kt	RNAV 1	
TF	ARNIT	N	385926.60N 0085733.61W	146 (143.7)	16.43	-	-	@180 kt	RNAV 1	
TF	UPKAT	N	385759.04N 0090212.05W	250 (248.1)	3.90	-	@4000 ft	@180 kt	RNAV 1	

LISBOA STAR RNAV1 XAMAX3B (RWY 20)										
Path Terminator	Waypoint			Course/Track MAG (True)	Dist NM	Turn Direction	Constraints		Navigation Specification	Remarks
	Identifier	Flyover	Coordinates				Level	Speed		
IF	XAMAX	N	400151.96N 0083210.34W	-	-	-	- FL250	@280 kt	RNAV 1	Clearance Limit: UPKAT
TF	PT810	N	394530.07N 0083048.57W	178 (176.3)	16.39	-	-	250 kt	RNAV 1	
TF	PT812	N	392353.37N 0084746.16W	213 (211.4)	25.26	-	-	250 kt	RNAV 1	
TF	PT832	N	392357.30N 0090707.63W	272 (270.4)	15.01	-	-	250 kt	RNAV 1	
TF	PT814	N	392358.01N 0092629.12W	272 (270.1)	15.01	-	- FL130	230 kt	RNAV 1	
TF	PT816	N	391857.63N 0092627.23W	182 (179.7)	5.00	-	-	230 kt	RNAV 1	
TF	PT818	N	390832.66N 0092623.32W	182 (179.7)	10.41	-	-	230 kt	RNAV 1	
TF	EKLID	N	390832.54N 0091549.09W	092 (090.0)	8.22	-	@FL080	@220 kt	RNAV 1	
TF	ROTBU	N	391146.95N 0090933.03W	058 (056.4)	5.85	-	@FL080	@220 kt	RNAV 1	
TF	LERLI	N	391254.12N 0090209.64W	081 (078.9)	5.85	-	@FL080	@220 kt	RNAV 1	
TF	FADEF	N	391143.70N 0085447.07W	103 (101.5)	5.85	-	@FL080	@220 kt	RNAV 1	
TF	PT852	N	390826.49N 0084833.35W	126 (124.1)	5.85	-	@FL080	@220 kt	RNAV 1	
TF	PT850	N	390332.78N 0084425.61W	149 (146.7)	5.85	-	@FL080	@220 kt	RNAV 1	
TF	COCUN	N	390135.52N 0090406.96W	265 (262.8)	15.46	-	-	@180 kt	RNAV 1	
TF	UPKAT	N	385759.04N 0090212.05W	159 (157.5)	3.90	-	@4000 ft	@180 kt	RNAV 1	